

One Good Turn

Coulee Region Woodturners



Chapter of the American Association of Woodturners

January 2023

www.crwoodturner.com

Volume 23, Issue 01

Next Meeting Saturday—January 21—9:00 AM

Happy New Year! Woodturners meeting, at Luther High School in Onalaska. Entrance is in the back corner, across from the goal posts. Park in the back, adjacent to the back alley. We'll be meeting in the school shop.

See you there.

CRW Activities Schedule

Jan. 21	Duane Hill	Tuning Your Turning	
Feb. 18	Ken Garden	French Rolling Pins	
April 15	Dan Wilson	Native Flute Follow-up	
April 30.	Earth Fair	Group Demo—Myrick Park, La Crosse	11 to 5
May 20	Jack Fitzpatrick	Fire Piston	
June 17	Aaron Gesicki	Footless Bowl	
Nov. 11	Mark Palma	To be determined	(Remember, second weekend)
Dec. 16	Christmas	Party Potluck	

Still need volunteers to fill the gaps for the missing months.

Explore AAW virtual events!



Learn and be inspired
in the comfort of your
own home.

More information from and about AAW events in your own shop or home is available at <https://www.woodturner.org/Woodturner/Woodturner/Virtual-Events/Master-Series-Landing-Page.aspx>

If you're a long-term planner—

<https://www.woodturner.org/Woodturner/Woodturner/2023Louisville>

Get ready for
Louisville
in 2023!



New Horizons is once again having their *Galentine's Day Fundraiser* to raise money for survivors of domestic abuse on February 11th. If you would like to donate something, please bring it to the meeting in January, arrange to bring it to me by February 2nd, or make arrangements to drop it off with New Horizons directly.

If you have any questions, please contact me at mogoldfish@yahoo.com or 608-345-5239.

If you would like to attend the event, please go to <http://www.nhagainstabuse.org/events/galentines-day-brunch-2/> to purchase tickets.

Thanks, Kris Clough

Wig Stands

CRW Members continue to give back to the community, creating and donating wig stands to local health care providers. [see the December photo album for the most recent donation collection]

We have received acknowledgements and thank you letters from Gundersen and Winona, expressing their gratitude and hopes for continuation of our generosity.

GUNDERSEN MEDICAL FOUNDATION

November 11, 2022

Coulee Region Woodturners
Bob Rmasch
1201 Lauderdale Pl
Onalaska, WI 54650

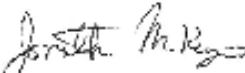
Dear Bob,

Thank you for your in-kind contribution of 62 hand-crafted wood wig stands to the Gundersen Medical Foundation to be used in our Gundersen Cancer Center for patients who have lost their hair from cancer treatments. We know your gift comes from the heart and we are deeply grateful.

Your generosity is a gesture of "paying it forward" during times of need, and we appreciate you thinking of Gundersen Health System when choosing to make your gift.

Together, we are improving the lives of patients and our larger community through medical education, research, community outreach and philanthropy. Thank you for your thoughtful contribution.

With sincerest appreciation,


Kathleen McKenzie, CFRE
Philanthropy Officer

*Many patients will benefit
from your work! thoughtful
generosity - we're so grateful!*

Article of the Month

From the AAW website—free resources for AAW members.

If you are gifting something small like jewelry, consider making a lidded box for it to go in. It could be two gifts in one! Learn how to make your own with Linda Ferber's article "Lidded Box Makes a Personal Gift" from *Woodturning Fundamentals*.

[Click here for a direct link to the article](#)

Lidded box makes a personal gift



by Linda Ferber

CRW Tools

Members, we have tools to check out. For a description and pics of most of them, go to the club website, <https://www.crowoodturner.com> Now look for Membership heading, scroll down to CRW Tool List. The list page document has the check-out process outlined, essentially the same as the library check out procedure. Or, if the link works in the pdf newsletter, try this for faster access. **See the list of tools for use by club members [here](#).**

Don't "call" the Tool Czar for details. Seeing is believing. Tools can only be checked out at club meetings. BTW, if you're a new member turner, we have a small 10" Jet lathe and basic kit tool bag to check out, see # 45 in the list. Very portable system to get you started. Go here—<https://jettools.com/719100> for information. **Tool Czar**

CRW Mission Statement: To promote, to educate, and to inspire ourselves and others in the fine art of turned wood.

CRW Officers



President

Jim Bloomer

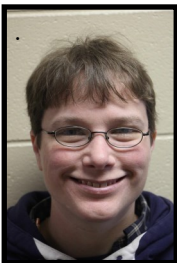
marine9096@gmail.co



Vice President

John Fisher

jdcrow1956@yahoo.com



Secretary

Kris Clough

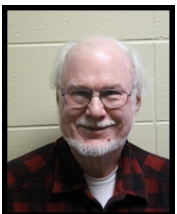
mogoldfish@yahoo.com



Treasurer

Jay Johnson

javejohnson099@centurytel.net



Program Director

John Griffiths

griff@mwt.net

Technical Advisors



Newsletter Editor

Aaron Gesicki

303-551-2450



Club photographer

Kevin Vossler

kvosslerwi@aol.com



Librarian

Jack Fitzpatrick



Webmaster

Ken Grunke

608-625-2412

kengrunke@gmail.com



Tool Czar

Bob Raasch

608-769-3833

raaschb@charter.net

CRW Club Mentors

All areas of turning and finishing. Duane Hill
Onalaska, WI. 608-397-9526

wisawdust@charter.net

Segmented Turning. Phil Miller La Crosse, WI.
792-1497 mpmopc@gmail.com

Experimentation, tool making, and metalworking.

Ken Grunke La Farge, WI 608-625-2412

kengrunke@gmail.com

Spindle turning. John Fisher Holmen, WI.
608- 526-4692 minnow1974@charter.net



Aaron Gesicki / Editor
1317 Woodpark Road
Winona, MN 55987
Phone: 303-551-2450
Email: AaronAGesicki@Gmail.com

"A Turn For the Better"



Next Meeting

Saturday

January 21, 2023

Here's a map to help those who aren't sure where we meet. It's the Luther High School Shop. 1501 Wilson St, Onalaska, WI, 54650
608-783-5435

We'll start the program promptly at 9 am, so get there early to avoid getting a Uecker Seat.

We'll have coffee, so Chocolate donuts are ALWAYS Welcomed.

